

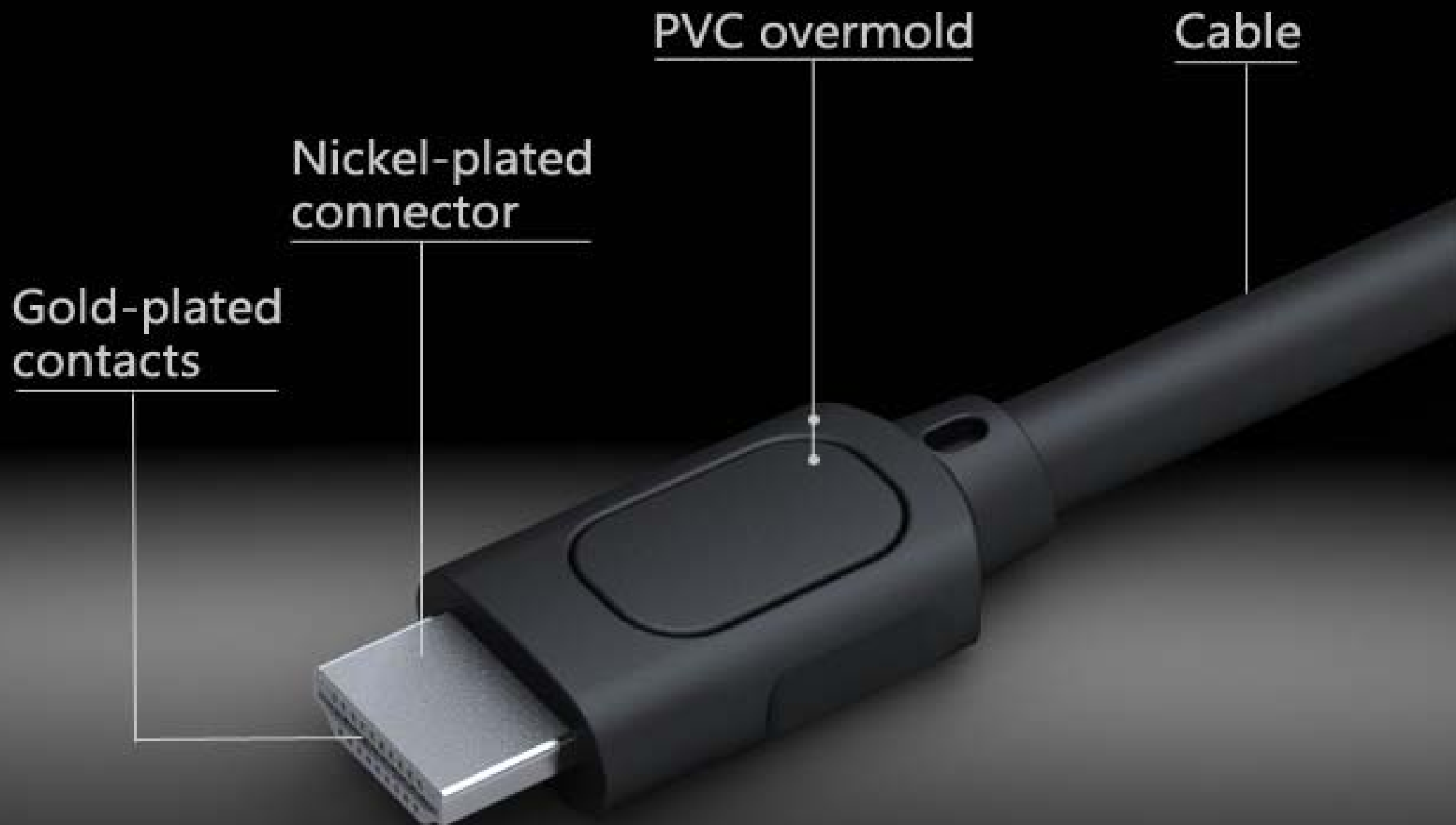
HDMI CABLES


Sinotek
A Professional Solution Provider

May 2009

<http://www.sinotek.biz>
marketing@sinotek.biz

Basic series



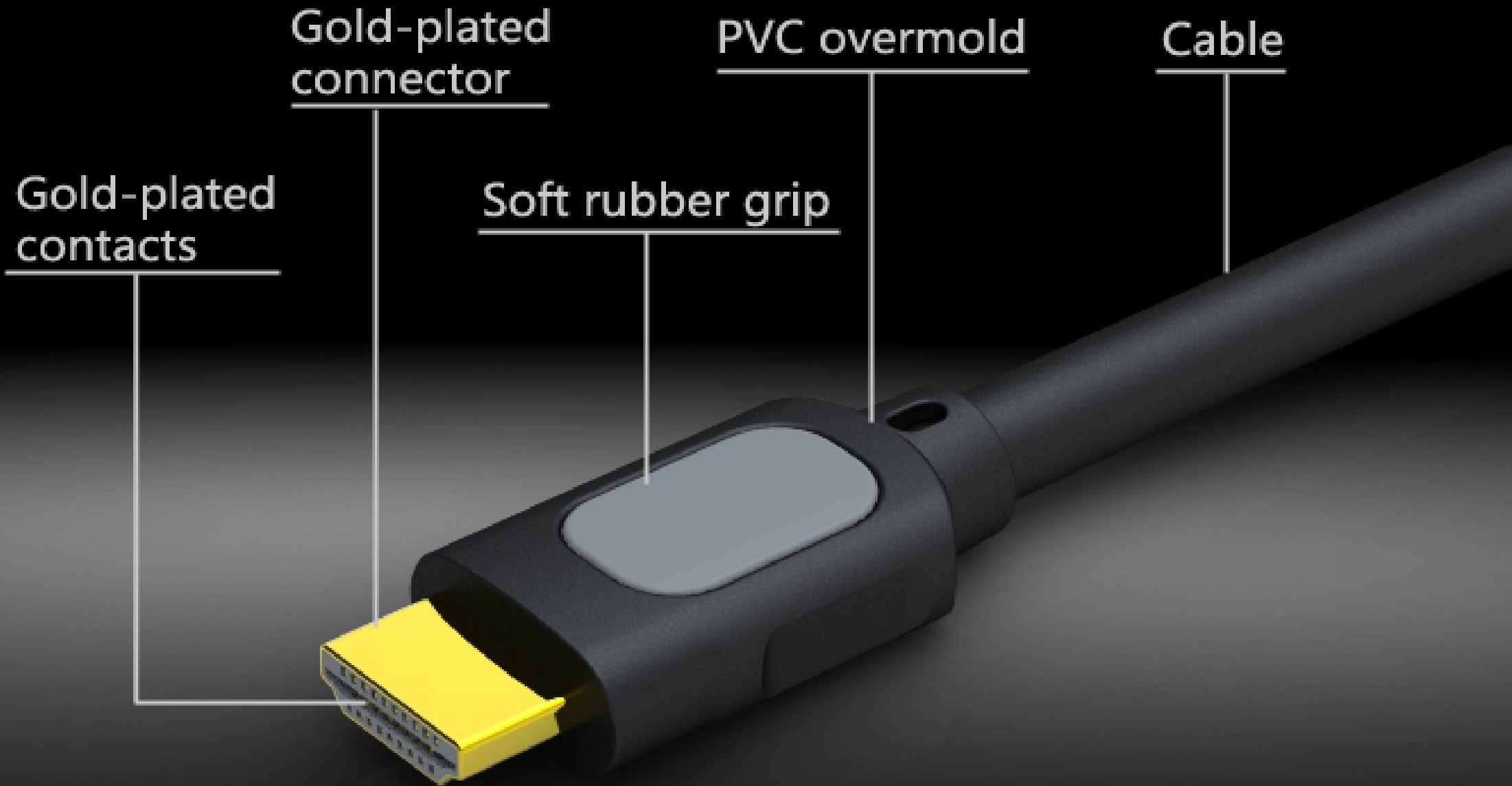
Basic series



- up to 15 meters at 1080p resolution
- Gold-plated contacts to ensure minimum contact resistance
- Inner rigid overmold and copper foil shield to eliminate interference and lower attenuation
- Nickel-plated connector and PVC overmold
- Most economical and reliable solution
- Available lengths (ft):

30 AWG	3, 6, 10, 15, 20,
28 AWG	3, 6, 10, 15, 20, 30,
26 AWG	3, 6, 10, 15, 20, 30, 40
24 AWG	3, 6, 10, 15, 20, 30, 40, 50

Good series

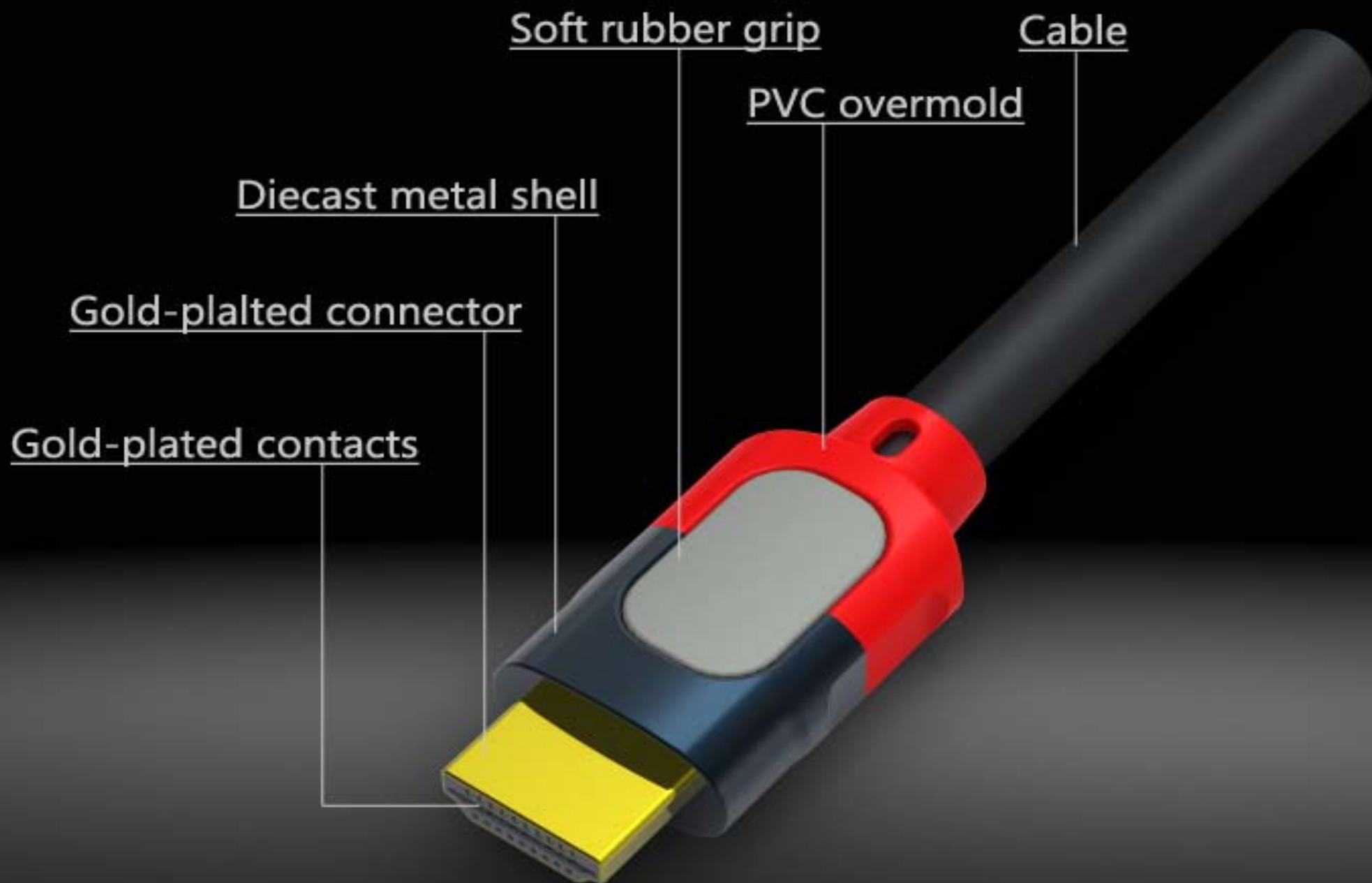




- Good bandwidth
- up to 18 meters at 1080p resolution
- Gold-plated contacts to ensure minimum contact resistance
- Gold-plated connector for least contact resistance and best corrosion resistance
- Inner metal sheet shield to eliminate interference and depress attenuation
- Available lengths (ft)

30 AWG	3, 6, 10, 15, 20, 25
28 AWG	3, 6, 10, 15, 20, 30, 40
26 AWG	3, 6, 10, 15, 20, 30, 40, 50
24 AWG	3, 6, 10, 15, 20, 30, 40, 50, 60

Premium series



Premium series

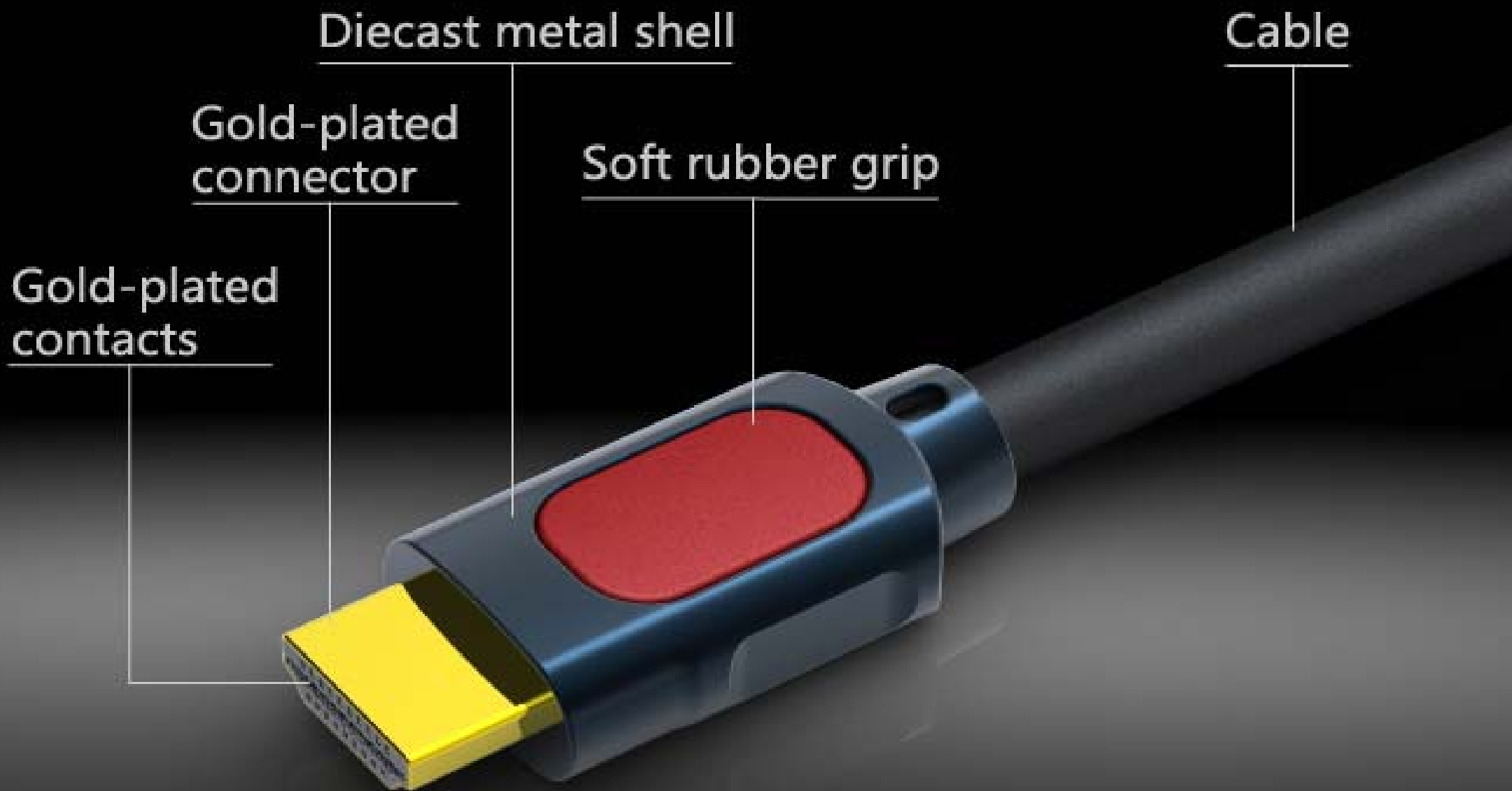


- excellent bandwidth
- up to 18 meters at 1080p resolution
- Gold-plated contacts to ensure minimum contact resistance
- Gold-plated connector for least contact resistance and best corrosion resistance
- Inner metal sheet shield, and outer die-cast half shell to eliminate interference and depress attenuation
- Available lengths (ft)

30 AWG	3, 6, 10, 15, 20, 25
28 AWG	3, 6, 10, 15, 20, 30, 40
26 AWG	3, 6, 10, 15, 20, 30, 40, 50
24 AWG	3, 6, 10, 15, 20, 30, 40, 50, 60



Ultimate series



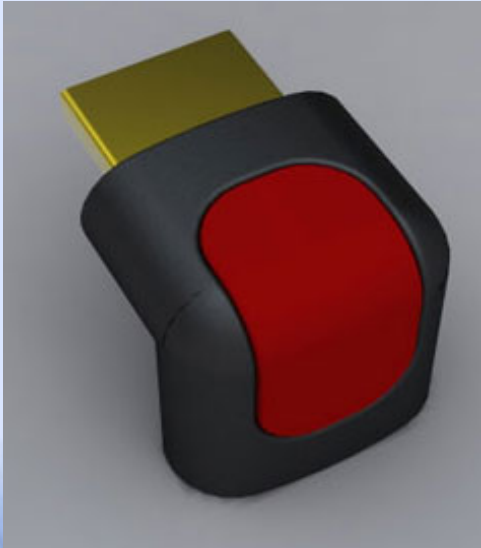
Ultimate series



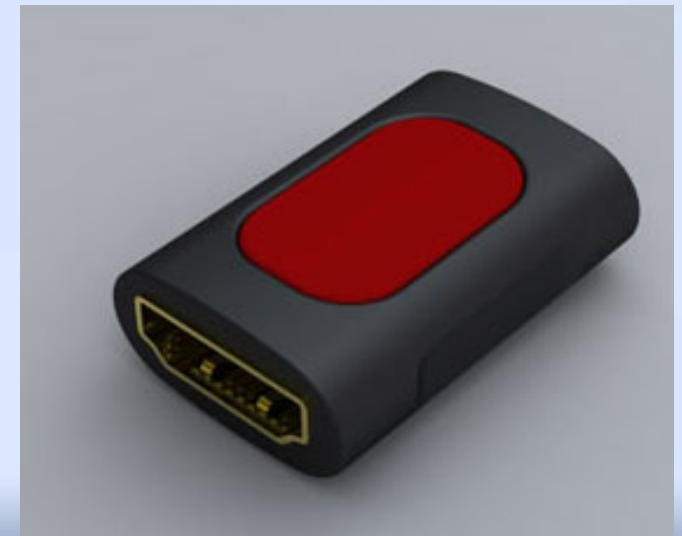
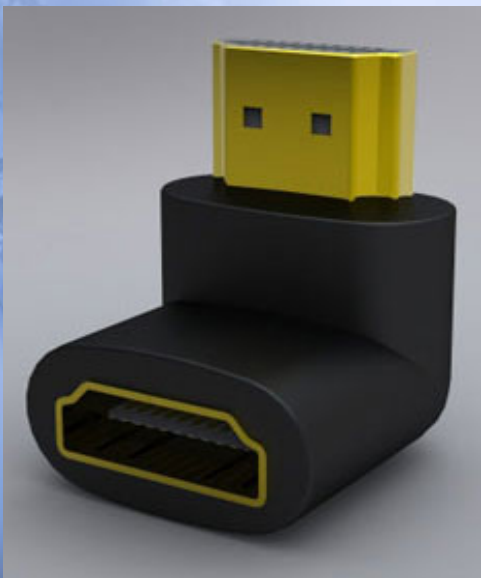
- Best bandwidth
- up to 24 meters at 1080p resolution
- Gold-plated contacts to ensure minimum contact resistance
- Gold-plated connector for least contact resistance and best corrosion resistance
- Inner metal sheet shield, and outer die-cast shell to eliminate interference and depress attenuation
- Available lengths (ft)

30 AWG	3, 6, 10, 15, 20, 30
28 AWG	3, 6, 10, 15, 20, 30, 40, 45
26 AWG	3, 6, 10, 15, 20, 30, 40, 50, 60
24 AWG	3, 6, 10, 15, 20, 30, 40, 50, 60, 80

Adaptor

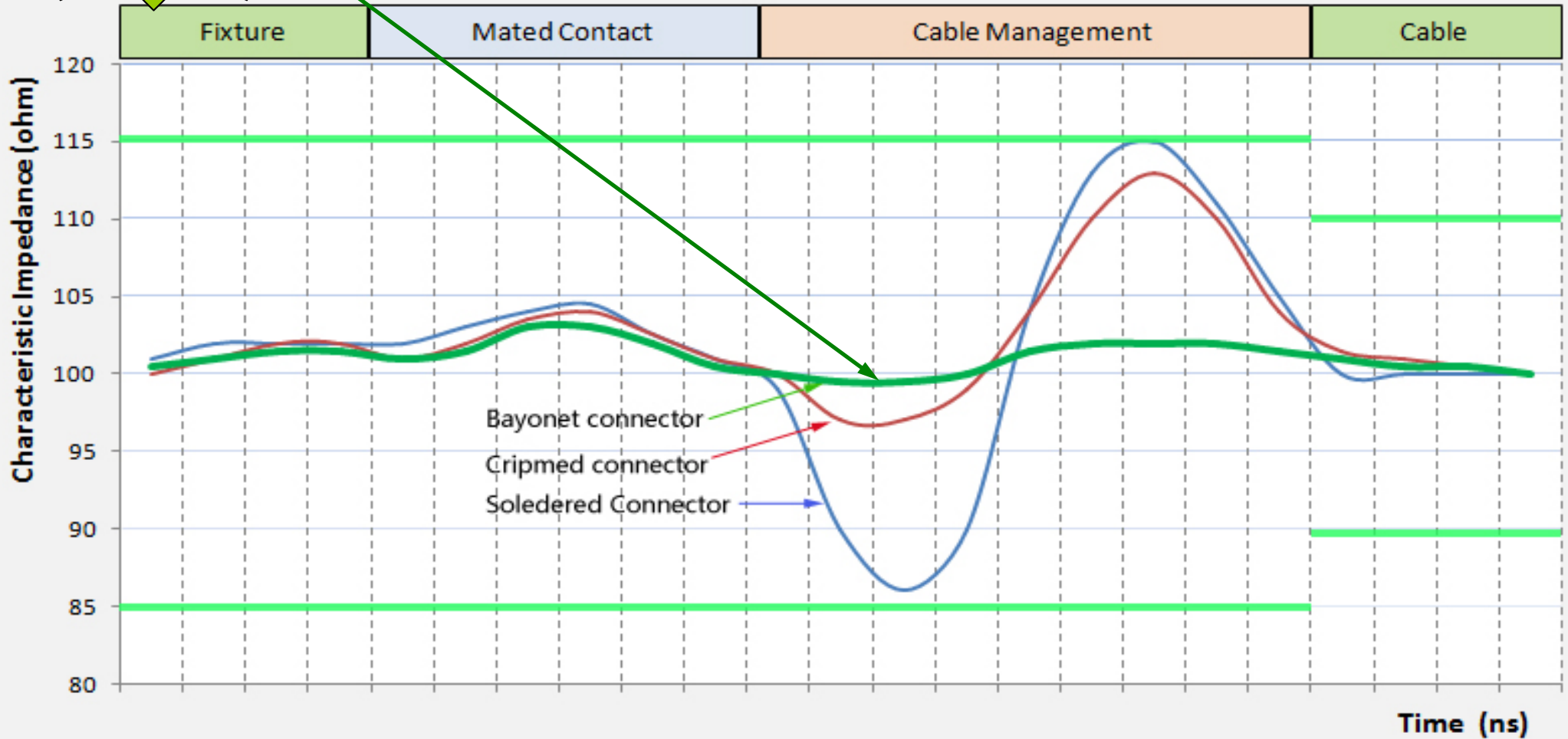


- Tiny 90 degree adaptor designed specially for quick connection in tight spaces behind TV or DVD-player
- Internal pin-to-pin connection directly without any wire soldering
- 100% internal shield against EMI
- Precision mated impedance and low attenuation to reduce signal loss
- 24K gold-plating for low contact resistance and corrosion-resistance

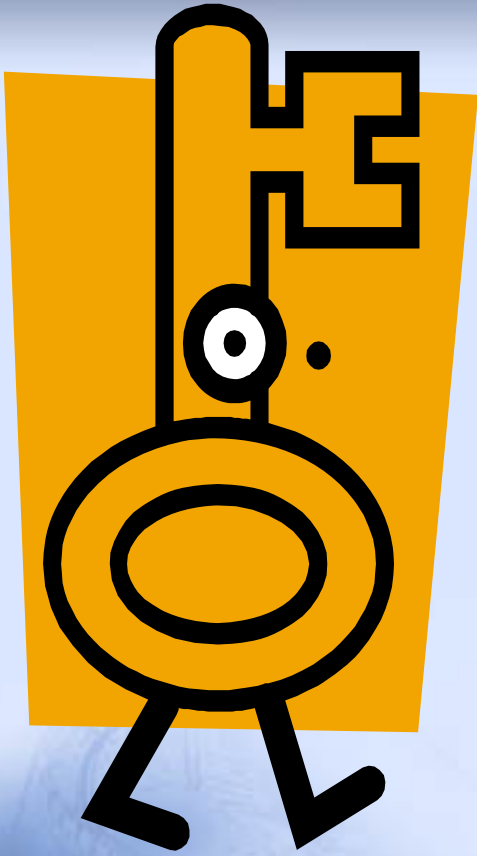


Sinotek's patented HDMI connector

What's the difference?



Mated Impedance Profiles of Three Types of HDMI Connectors



Why us?



- More than 16 years of experience in cable industry, and 5 years of experience in HDMI connector/cable R&D and manufacturing since the initial version of HDMI specifications
- More stable mated impedance than soldered connector
- Less attenuation for more reliable signal transmission
- Free mold design, free mold for 3000 pieces order
- Patented original HDMI connector and assembly fixtures to ensure 2~3 times higher mass production efficiency than the competitors
- Most competitive price in the cable industry